



**CENTRALISED GARBAGE
COLLECTION SYSTEM**



**GARBAGE CHUTE
LINEN CHUTE
DEBRIS CHUTE**



ORIGIN

TECHNO SOLUTIONS LLP

CENTRALISED GARBAGE & LINEN CHUTES SYSTEM

DESIGN OF CHUTE

CHOICE OF MATERIAL

ORIGIN strongly recommended the use of **Stainless Steel** for the manufacture of garbage chutes. Stainless Steel is highly resistant to the humidity, acid and alkalis contained within garbage.

MATERIAL THICKNESS OF CHUTES

ORIGIN provides the following material thickness: **1.0 mm / 1.25 mm / 1.5 mm**

CHUTE & DUCT SIZE

TYPE OF BUILDING	CHUTE DIAMETER	DUCT OPENING
Residential	400 mm / 450 mm	600 mm X 600 mm
Residential	500 mm	650 mm X 650 mm
Commercial	600 mm	750 mm X 750 mm
Malls / Hotels / Hospitals	700 mm	900 mm X 900 mm

- Front wall shall be constructed after the erection of chute.
- Provide single phase power connection at top most level & garbage room, water connection with isolation valve, and 1" wet riser for fire protection system.

INTAKE DOOR

- Intake doors are designed to discharge garbage directly into a garbage chute or a container.
- Intake door are top opening & bottom hinged.
- Intake door are self-closing with a positive latching / Gas Pump system.
- Fixed with chute throat in face with front wall.



CHUTE DIAMETER	INTAKE DOOR SIZE (STANDARD)
400 mm / 450 mm	300 mm x 350 mm
500 mm	340 mm x 420 mm
600 mm	380 mm x 460 mm
700 mm	520 mm x 520 mm

VENT

- Air Exhaust Fan installed at the top of the chutes, usually above roof level to remove foul smell and maintain a smooth flow of fresh air within the chute.

DISCHARGE & GARBAGE BIN

- Garbage chute is directly connected to trolley.
- Conical hopper type discharge end to avoid spoiling of garbage.
- Standard sized plastic trolley provided with the chute.



CENTRALISED GARBAGE & LINEN CHUTES SYSTEM

CHUTE CLEANING

SPRINKLER / MANUAL CLEANING SYSTEM

- PVC piping is used along the length of the chute which is connected to the main water tank of the building.
- Handy sprayer tool is connected to water nozzle and used for deep cleaning of the chute, throat and intake door at each floor.
- Solid cone profile discharge sprinklers located at all floors behind the door opening for cleaning issues.

DISINFECTING AND SANITIZING UNIT

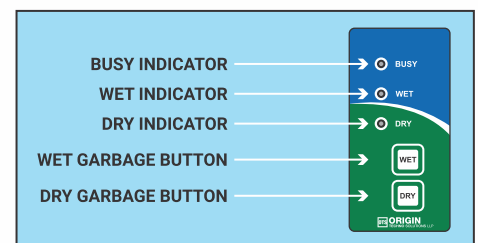
- Disinfectants are added in normal water line by motorized pump during cleaning cycle.
- This unit is installed at roof level which is operated by electrically control panel / manually.
- Disinfectant and sanitizing unit overcomes the problem associated with the chutes-strong odours.

FIRE SAFETY

- Glass bulb sprinklers installed inside the chute in each floor / alternate floor / lower initial floor.

SEGREGATED GARBAGE COLLECTION SYSTEM

- More than one user cannot use garbage system at a time.
- Diverter link is set at the discharge end of the garbage chute.
- Mechanically operated rotating arm diverts the Dry garbage and collected in separate bin.
- LED Panel & Waste Selection at each intake door
- Close all intake door while maintenance & cleaning operation.
- Single door access at a time



SEGREGATION & COLLECTION SYSTEM



ACTUAL SITE IMAGE OF GARBAGE CHUTE

CENTRALIZED DEBRIS CHUTE SYSTEM

KEY-FEATURE

- Single point collection of entire building construction and demolition (C&D) waste.
- Easy to use , assemble and dismantle as per requirement.
- Reusable for multiple sites or projects.

Mild Steel Chute with colour coating

- Male / Female and C clamp type

Plastic Drum Chute

- Mild steel structure and C clamp type
- Spray painting with hardner.
- **Mounting:** Floor support structure, anchor fastener.



CLEANING CONTRACT

- We provide you Deep Cleaning Contract of your Garbage Chute on AMC/Call Basis.
- In this contract, we provide complete deep cleaning of your garbage chute from top to bottom.

MAINTENANCE CONTRACT

- We would like to inform you that, we are providing The Annual Maintenance / Service Contract of our or any other make Garbage Chute / Linen chute.
- Maintenance contract consists of regular examinations and any minor necessary adjustments of the equipment by competent employees under direction and supervision.



ORIGIN TECHNO SOLUTIONS LLP

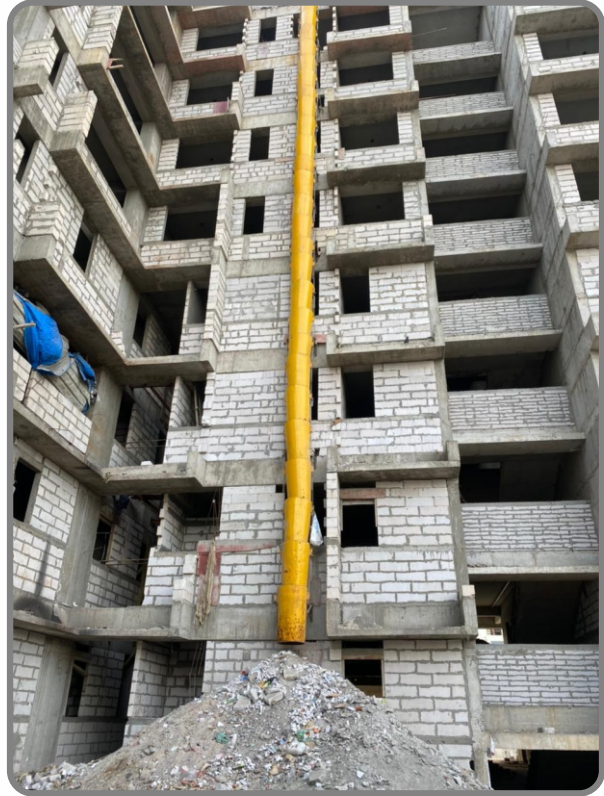
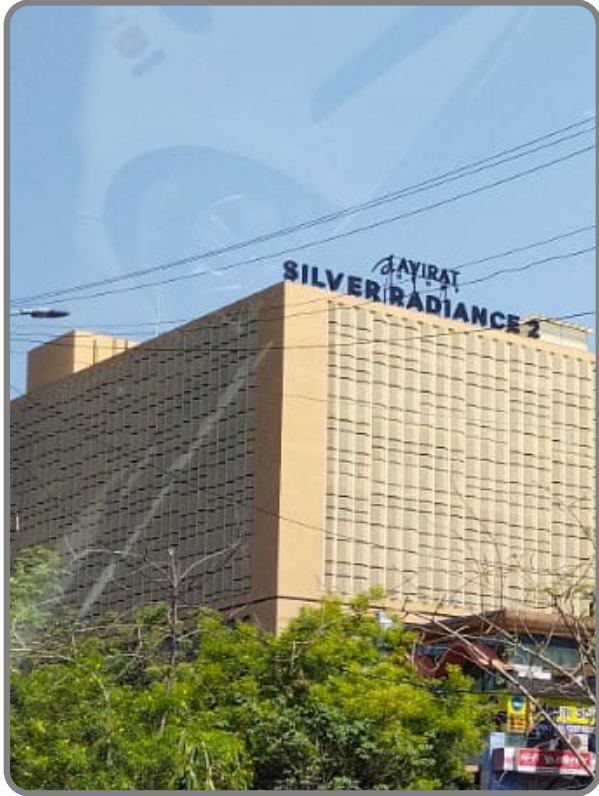
Plot-712/3, Parmeshwar Estate, B/s. Marudhar Industries, Phase-4, GIDC, Vatva, Ahmedabad - 382445, Gujarat, India.

M.: +91 97129 89180 | +91 78788 31113 | +91 78747 57199 | +91 80001 51512

Ph.: +91 79908 88367 | E.: origintechnosolution@gmail.com

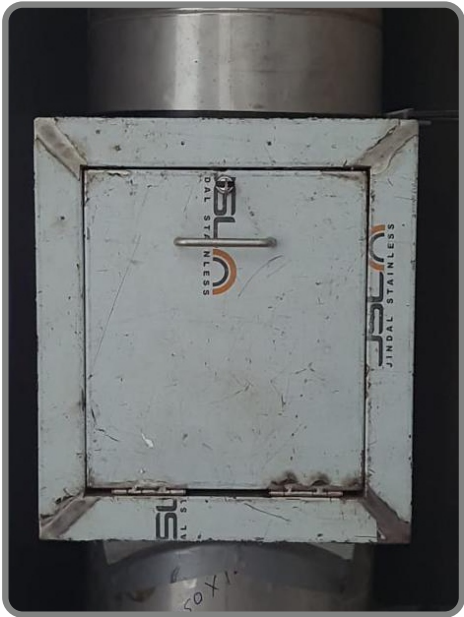
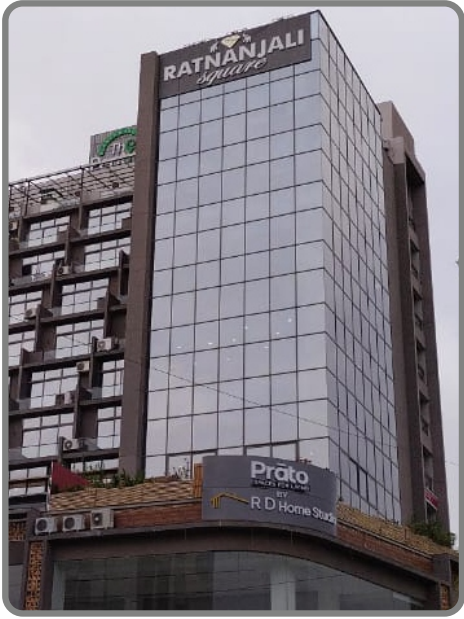


PROJECT DATA



SILVER RADIANCE 2

Avirat Builder

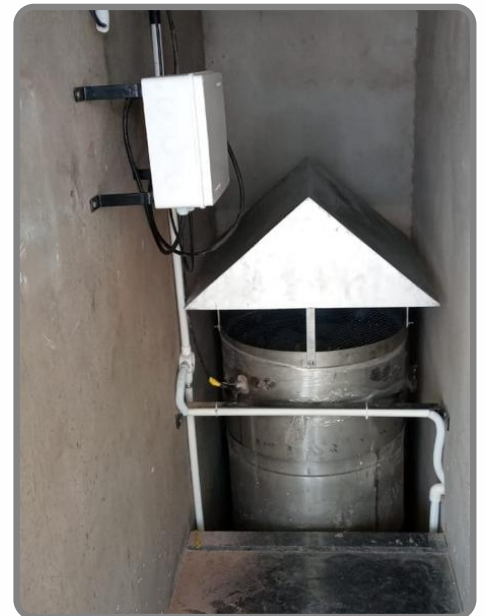


RATNANJALI SQUARE
Ratnanjali Builder



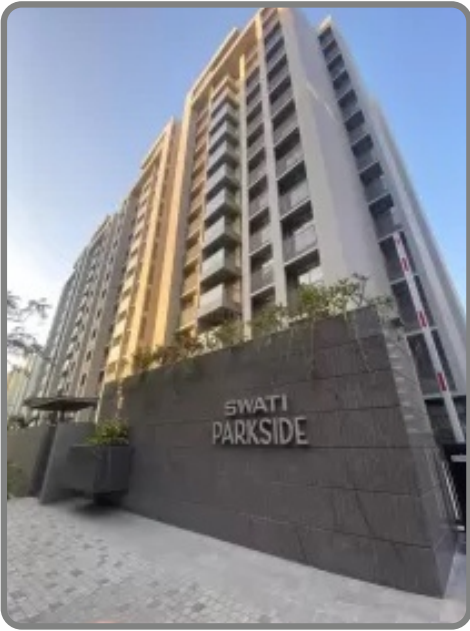
SANKALP GRACE 3

Sankalp Organisers



MAZER-E-KUTBI

Dawat Propertirs



SWATI PARKSIDE
Swati Sandhya Procon



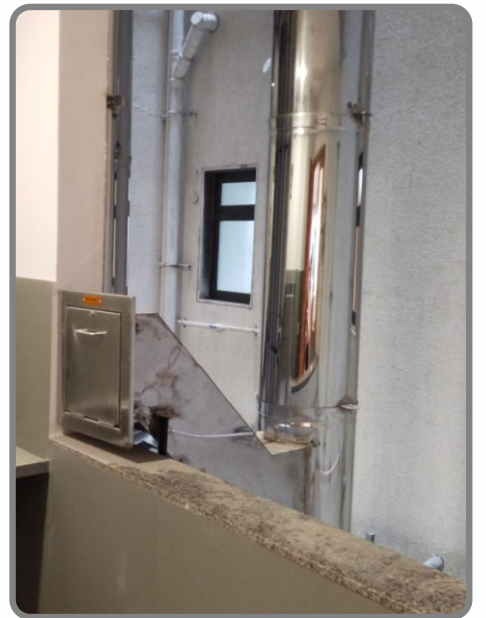
RATNADEEP FLOORA
Ratnadeep Infrastructure



GANDHI CHILDREN HOSPITAL
Dahod

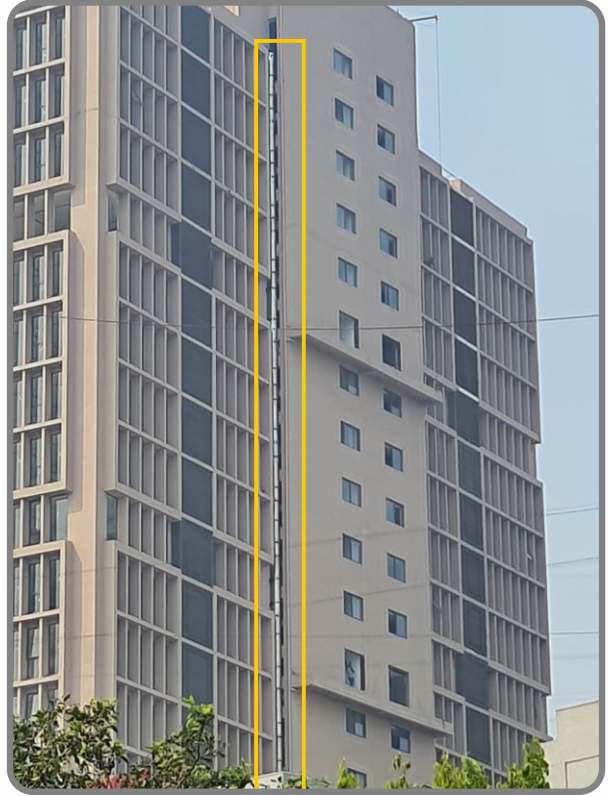


HOSTEL BUILDING AES
Riviera Infraprojects



GREENCRAFT RESIDENCES

Vishwanath Weathercraft



YASH ANANT
Aakash Buildspace



SWATI SENOR
Swati Construction



SWATI SYMPHONY

Swati Sandhya Procon



ADANI ARCWAY
Riviera Infraprojects



SUPER CITY JOY
Ahmedabad



AVAILABLE FEATURES



THANK YOU